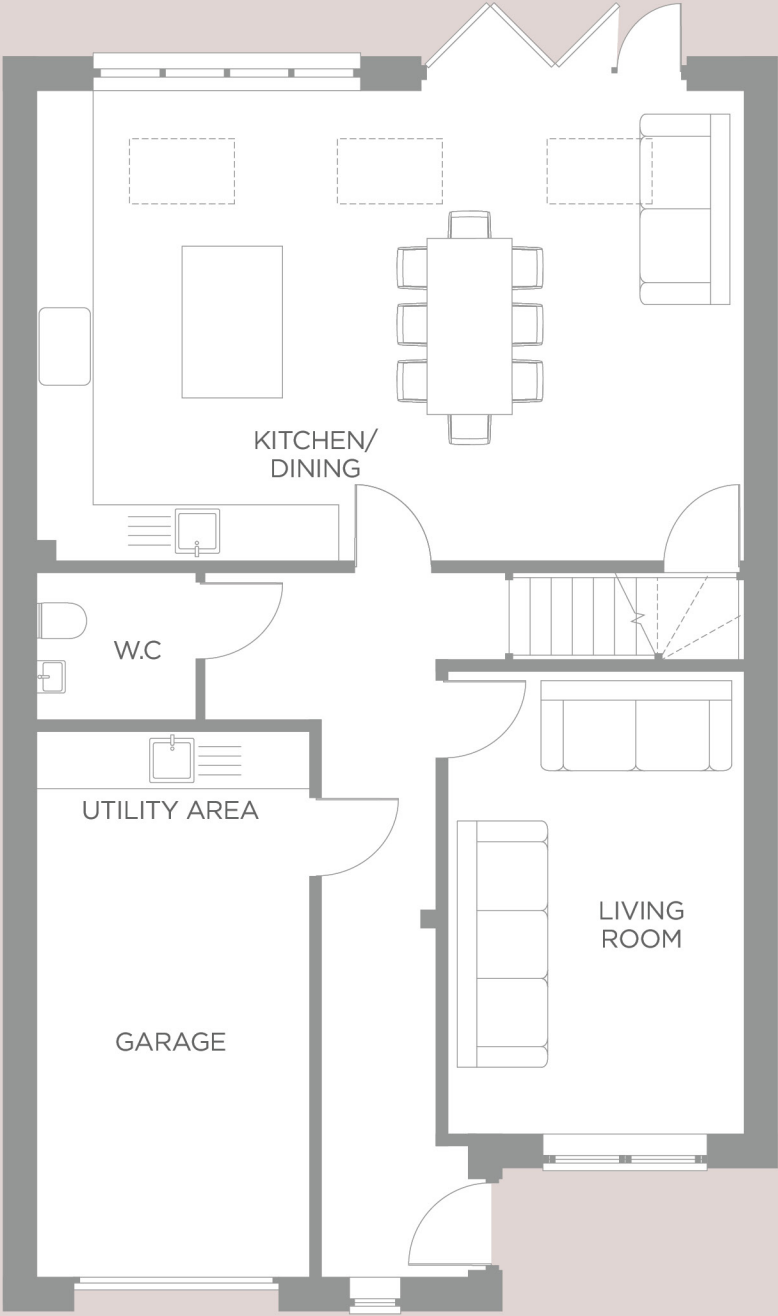
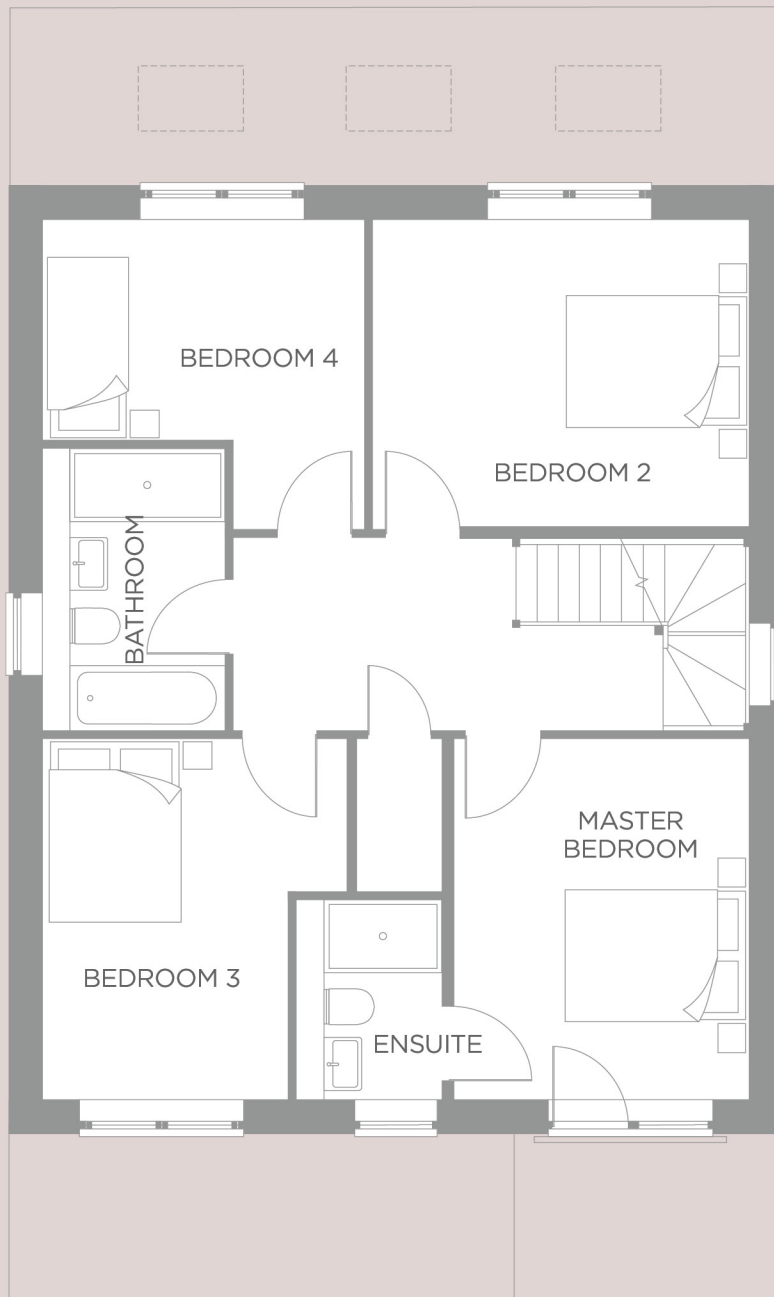


GROUND
FLOOR

Kitchen/Dining Area
7785mm x 5186mm
25'6" x 17'0"

Living Room
5092mm x 3250mm
16'8" x 10'7"





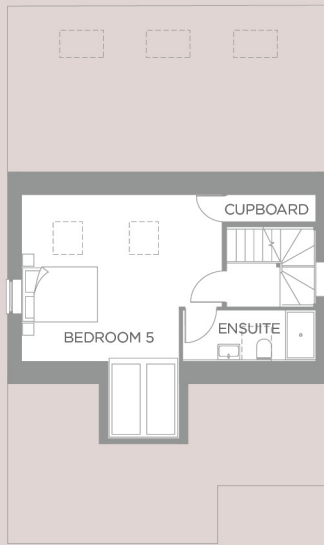
FIRST FLOOR

Master Bedroom
3979mm x 3250mm
13'0" x 10'7"

Bedroom Two
4150mm x 3388mm
13'7" x 11'1"

Bedroom Three
3979mm x 3354mm
13'0" x 11'0"

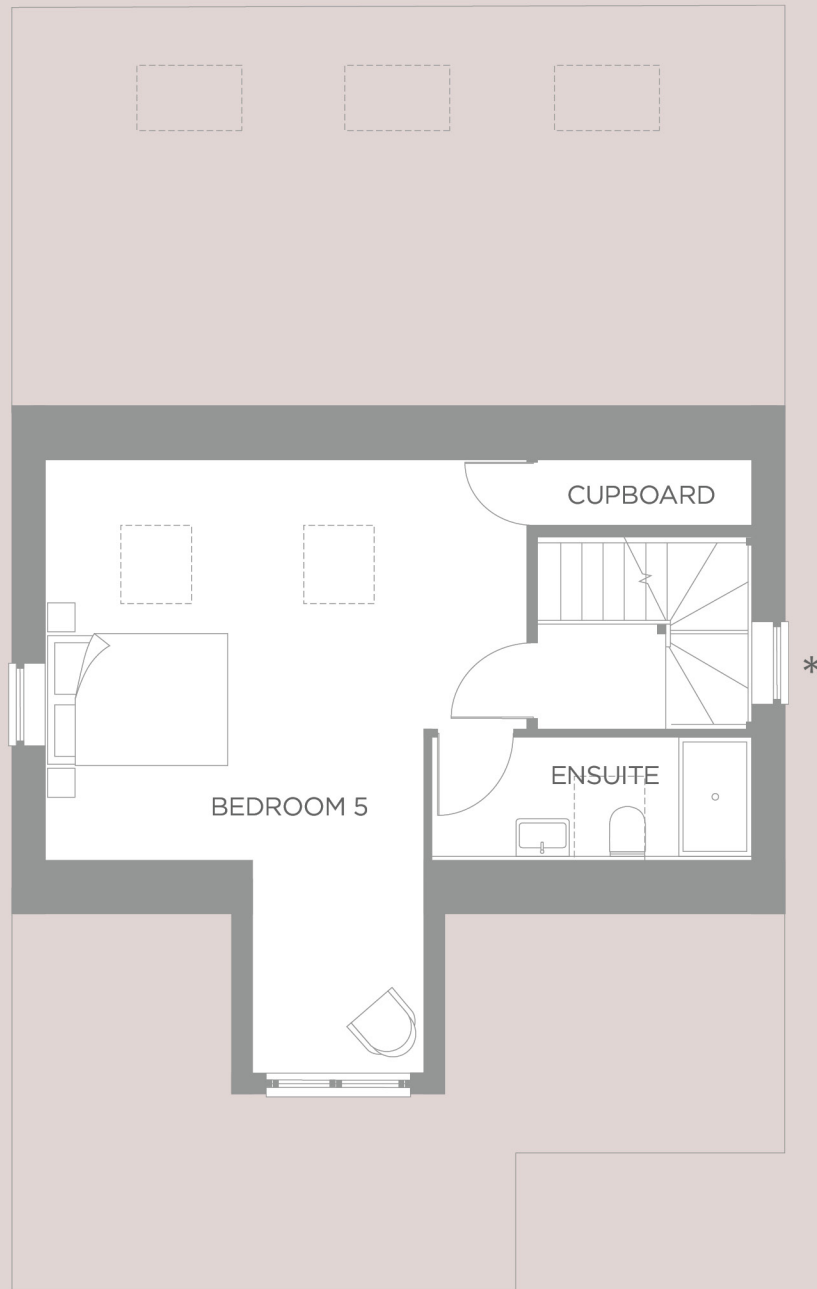
Bedroom Four
3536mm x 2425mm
11'7" x 7'11"



WINDOW VARIATION
TO PLOTS 2 & 4

SECOND FLOOR

Bedroom Five
5326mm x 4740mm
17'5" x 15'6"



* WINDOW ON PLOTS 1, 2, 3 AND 4 ONLY